

- ✦ *This Products Developed As CGWA Guide Lines*
- ✦ *Rules As per Certification ISO 4064-1:2014*
- ✦ *Easy to Install IP 68*
- ✦ *Sensor IP 66 Display Enclosure*
- ✦ *Cable Length as per your requirement*
- ✦ *High accuracy*

Product Overview

With our Telemetry System you can collect flow meter data directly from RS485 Enabled flow meter and make this data into actionable insights through user-friendly cloud based dash boarding so you can make better decisions based on facts With our cloud based dash boarding, we can help you you to bring more insights of liquid (water, chemical etc. usage in the plants and machines in a single platform eliminating the complex multi software, expensive software thus bringing down the IT capital costs

Feature :

- ***Ix RS-485potModbus***
- ***OTA (Over The Aii) Fairway e support.***
- ***LED Indicator provides Power,***
- ***Network, Cloud and Communication status***
- ***Keep Alive command to maintain socket connection***
- ***Robust Industrial Design & Easy to install and integer***
- ***Visualize the collected data on a dashboard***
- ***Analyze incoming data to derive actionable insights***
- ***Store data for reporting and historical analysis***
- ***Automatic reports generation with defined time intei-vals and to configure mails***

Technical Specifications:

INPUT : 12V DC

Indication : Networks Led Indication

Communication Input : RS 485

Enclosure : IP65

Op Temperature : -5 to 65 Deg

Humidity : 97% RH

Network Type : GSM, Low Power - 2G,3G, 4G(Quad-band 850/900/ 1800/ I 900M Hz)

Technical Specifications:

INPUT : 12V DC

Indication : Networks Led Indication

Communication Input : RS 485

Enclosure : IP65

Op Temperature : -5 to 65 Deg

Humidity : 97% RH

Network Type : GSM, Low Power - 2G,3G, 4G(Quad-band 850/900/ 1800/ I 900M Hz)

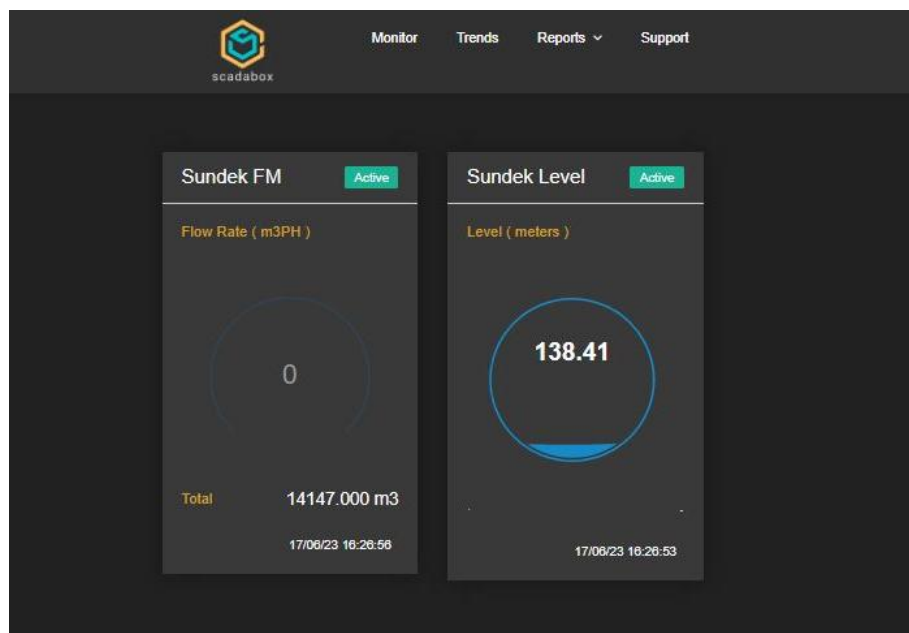
PIEZO METER WITH TELEMETERY

Piezometer Installation

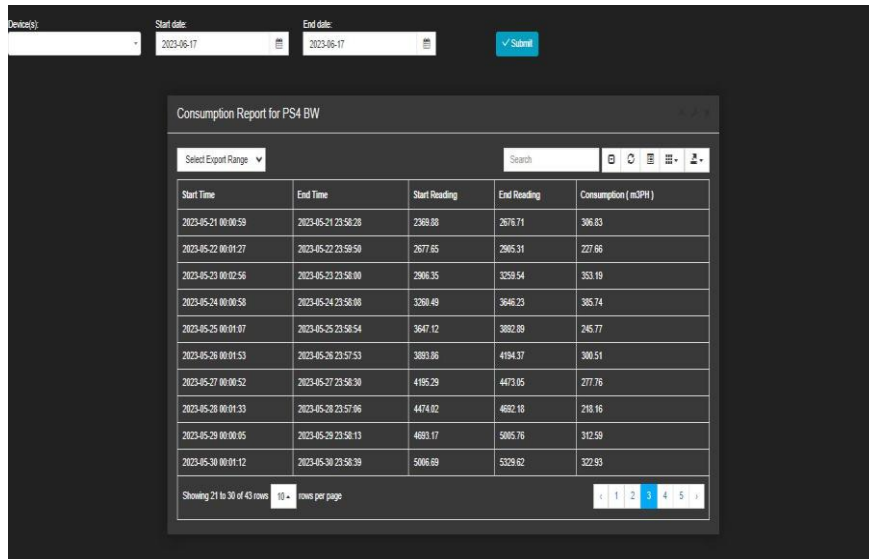


Cloud Data System

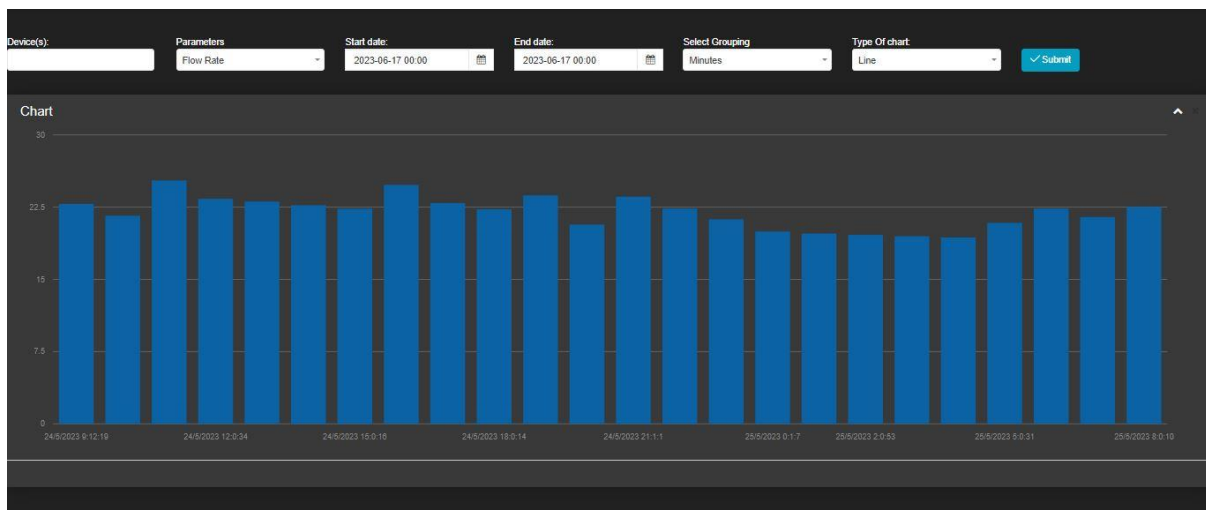
Dashboard View



Real Time Data



Level Chart



Graphical Line

